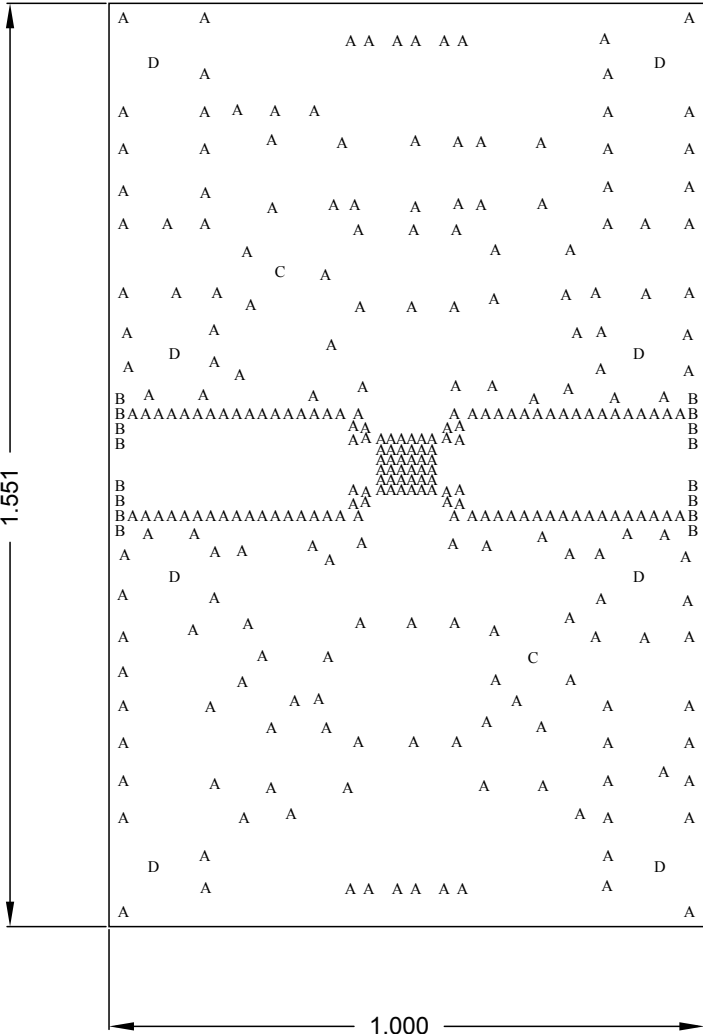


NOTES (UNLESS OTHERWISE SPECIFIED):

1. BOARD FABRICATION METHODS MUST COMPLY WITH:  
FABRICATE IN ACCORDANCE WITH IPC-6018B, per IPC-6011, CLASS 2.
2. ARTWORK FORMAT: GERBER 274X  
GERBER DATA SUPPLIED WITH DESIRED FINAL TRACE WIDTHS. PROCESS  
COMPENSATION TRACE WIDTH ADJUSTMENTS TO BE DONE BY PCB FABRICATOR
3. MATERIAL:  
NUMBER OF LAYERS: 2 LAYERS  
METAL 1 (TOP): .5 oz TO START, 1 oz. FINISH WHEN EXTRA PLATING CYCLE AFTER VIA FILL.  
CORE 1: ROGERS 4003C, 0.008in. THICK  
METAL 2 (BOTTOM): .5 oz TO START, 1 oz. FINISH WHEN EXTRA PLATING CYCLE AFTER VIA FILL.  
SOLDERMASK TOP: LPI (LIQUID PHOTO-IMAGEABLE), BLUE OR LDI (LASER DIRECT IMAGEABLE), BLUE. MAX FINISH  
THICKNESS OF SOLDERMASK TO BE 0.001in.  
SILKSCREEN TOP: HIGH TEMPERATURE, NON-CONDUCTIVE, WHITE EPOXY BASED INK.
4. FINISH PLATING:  
METAL 1 (TOP) AND METAL 2 (BOTTOM):  
ENIG (ELECTROLESS NICKEL/IMMERSION GOLD):  
ELECTROLESS NICKEL per IPC-4552, 118 - 236µin. (3 - 6µm)  
IMMERSION GOLD per IPC-4552, 3 - 10 µin (0.08 - 0.25µm)
5. FINISHED BOARD THICKNESS: (0.012in.)
6. COPPER IS PULLED BACK 0.004in. GROUND PLANE ONLY FROM EDGE OF BOARD ON  
METAL 1 (TOP) AND METAL 2 (BOTTOM).  
THESE VALUES ARE CRITICAL AND MUST BE INSPECTED.
7. TOLERANCE: PC BOARD OUTLINE: ±0.003in.
8. BURRS SHALL NOT EXCEED 0.002in.
9. VIA PLATING/FILLING:  
A. ALL VIAS ARE TO BE:  
EPOXY-FILLED, (TATSUTA 8E3030) CONDUCTIVE EPOXY, PLANARIZED.. FINISHED COPPER THICKNESS TO BE  
0.0014 ±0.0004in.  
  
B. ALL OTHER PLATED THRU HOLES TO BE PLATED TO 0.0014 ±0.0004in. MIN. THICKNESS.
10. METAL 1 TOP AND METAL 2 BOTTOM SHALL BE PLANARIZED AFTER PLATING HOLES SHUT.  
MAX ALLOWABLE NEGATIVE FEATURE 0.0008in. MAX ALLOWABLE POSITIVE FEATURE 0.0003in.
11. CONDUCTOR WIDTHS AND SPACING TO BE WITHIN 0.001in. OF CAD DATABASE.
12. SOLDERMASK IN PLATED-THRU HOLES IS ACCEPTABLE AS LONG AS IT DOES NOT EXIST ON BACKSIDE OF BOARD.
13. ALL HOLES TO BE LOCATED WITHIN ±0.003 OF CAD DATABASE.
14. NO VENDOR MARKING OR SERIALIZATION ALLOWED.
15. DELIVER BOARDS BAGGED AS: SINGLES
16. NO ELECTRICAL TEST NEEDED.

| REVISION HISTORY |             |          |          |
|------------------|-------------|----------|----------|
| REV              | DESCRIPTION | DATE     | APPROVAL |
| A                | NEW RELEASE | 02-23-18 | TThomas  |




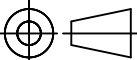
LAYER STACK LEGEND

|                          | Material         | Layer          | Thickness |
|--------------------------|------------------|----------------|-----------|
|                          |                  | SILKSCREEN_TOP |           |
|                          | Surface Material | SOLDERMASK_TOP | 0.0010in  |
|                          | Copper           | METAL1_TOP     | 0.0014in  |
|                          | Core             |                | 0.0080in  |
|                          | Copper           | METAL2_BOTTOM  | 0.0014in  |
| Total thickness: 0.012in |                  |                |           |

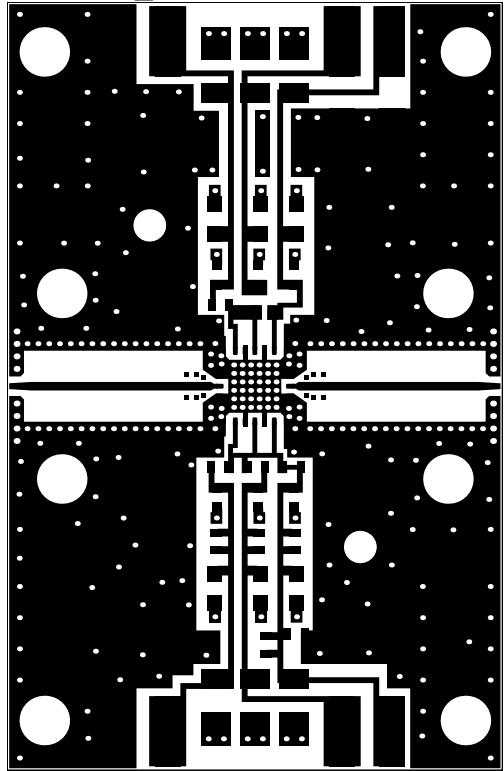
Drill Table

| Symbol | Count | Hole Size    | Plated     | Via / Pad |
|--------|-------|--------------|------------|-----------|
| A      | 291   | 10.00(0.25)  | Plated     | Via       |
| B      | 16    | 12.00(0.30)  | Plated     | Via       |
| C      | 2     | 63.00(1.60)  | Non-Plated | Pad       |
| D      | 8     | 100.00(2.54) | Plated     | Pad       |

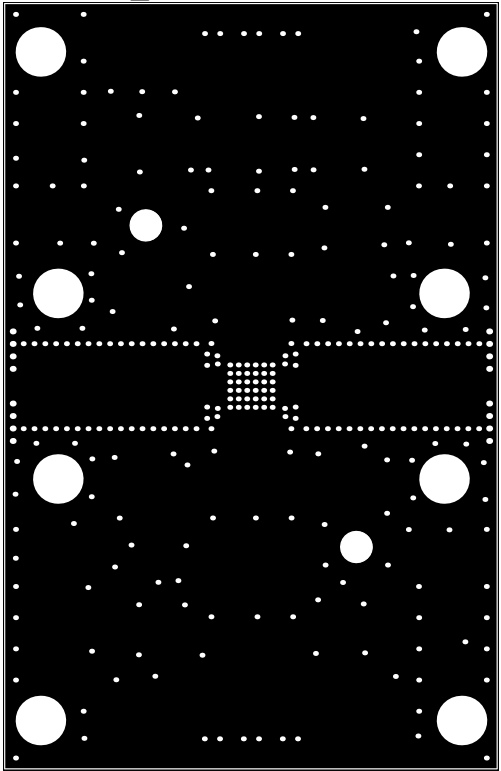
THIS DOCUMENT IS CONFIDENTIAL AND REPRESENTS  
PROPRIETARY INFORMATION, THE PROPERTY OF QORVO  
AND SHALL NOT BE REPRODUCED IN ANY MANNER  
NOR USED FOR ANY PURPOSE WHATSOEVER,  
EXCEPT AS SPECIFIED IN WRITING BY QORVO

|   |  |          |   |              |                            |      |
|---|--|----------|---|--------------|----------------------------|------|
| UNLESS OTHERWISE<br>SPECIFIED: DIMENSIONS<br>ARE IN INCHES  | SAP NO. 287458   |          |  |              |                            |      |
|   | APPROVAL AND RELEASE<br>RECORDS MAINTAINED IN PDE                                |          |   |              | DATE                       |      |
|   | TOLERANCES<br>..XX = ±.01<br>..XXX = ±.005<br>..XXXX = ±.0010<br>ANGLES = ± 0.5° | DESIGNER | TThomas   | TThomas      | TITLE:<br><br>PCB, QPA2735 |      |
|   | ENGR.  | RClark   | 02-23-18  |              |                            |      |
|   | INTERPRET DRAWING<br>PER ANSI/ASME Y14.5 - 2009                                  |          |   |              |                            |      |
| <br>THIRD ANGLE PROJECTION<br>DO NOT SCALE DRAWING | PDE CONTROLLED   |          |   | SIZE         | DWG. NO.                   | REV. |
|   | CAGE CODE  | 1CVM1    |   | B            | QPA2735-4000               | A    |
|   |  |          | SCALE: 1:1  | SHEET 1 OF 3 |                            |      |

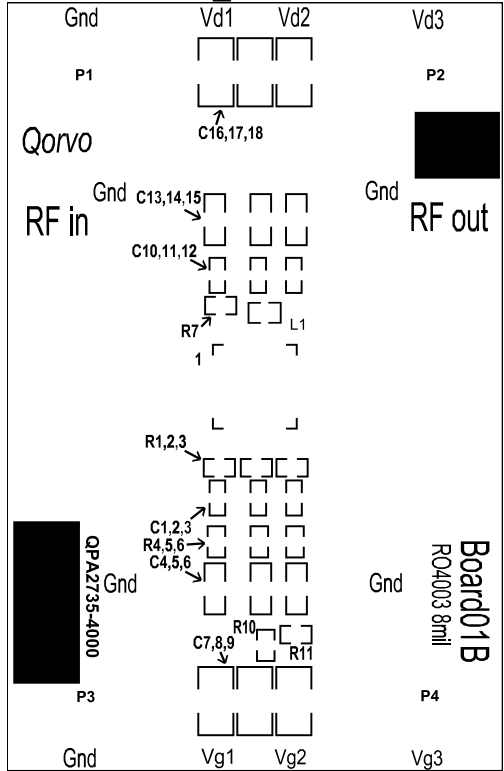
METAL1\_TOP



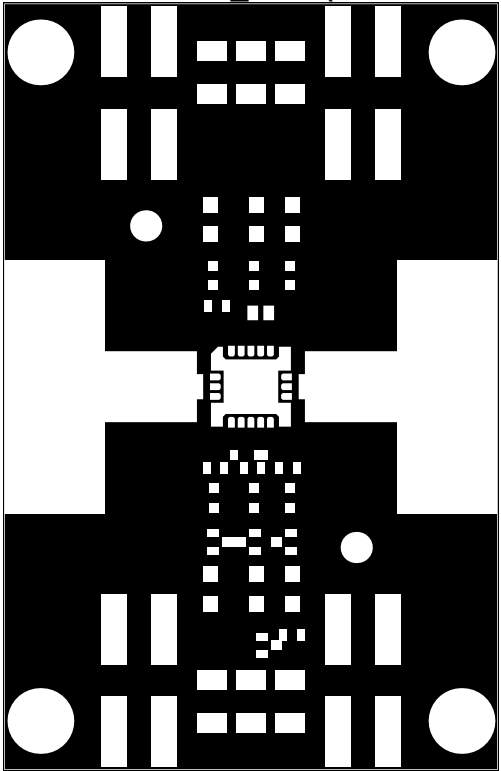
METAL2\_BOTTOM



SILKSCREEN\_TOP

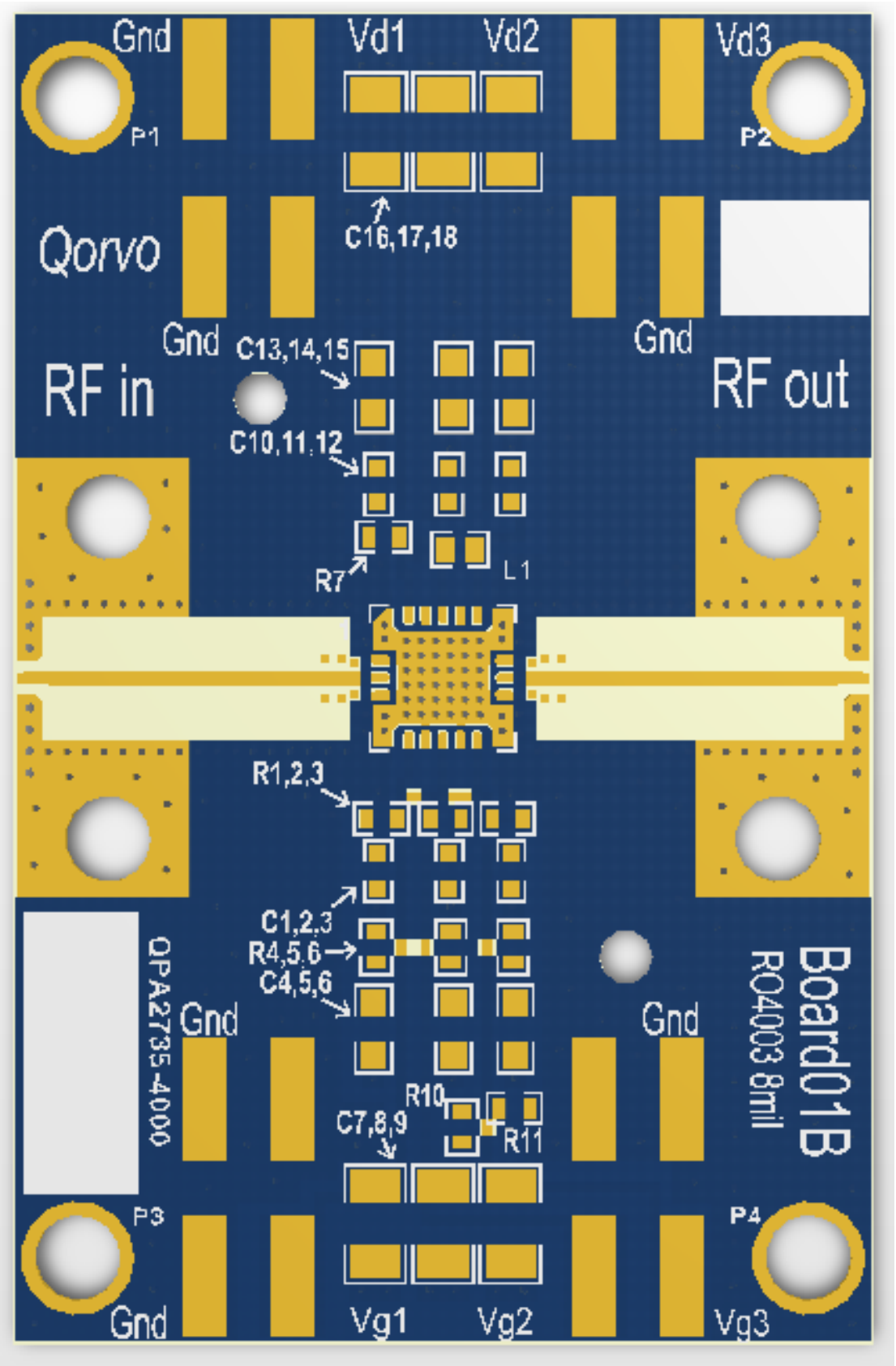


SOLDERMASK\_TOP (Inverted Image shown)



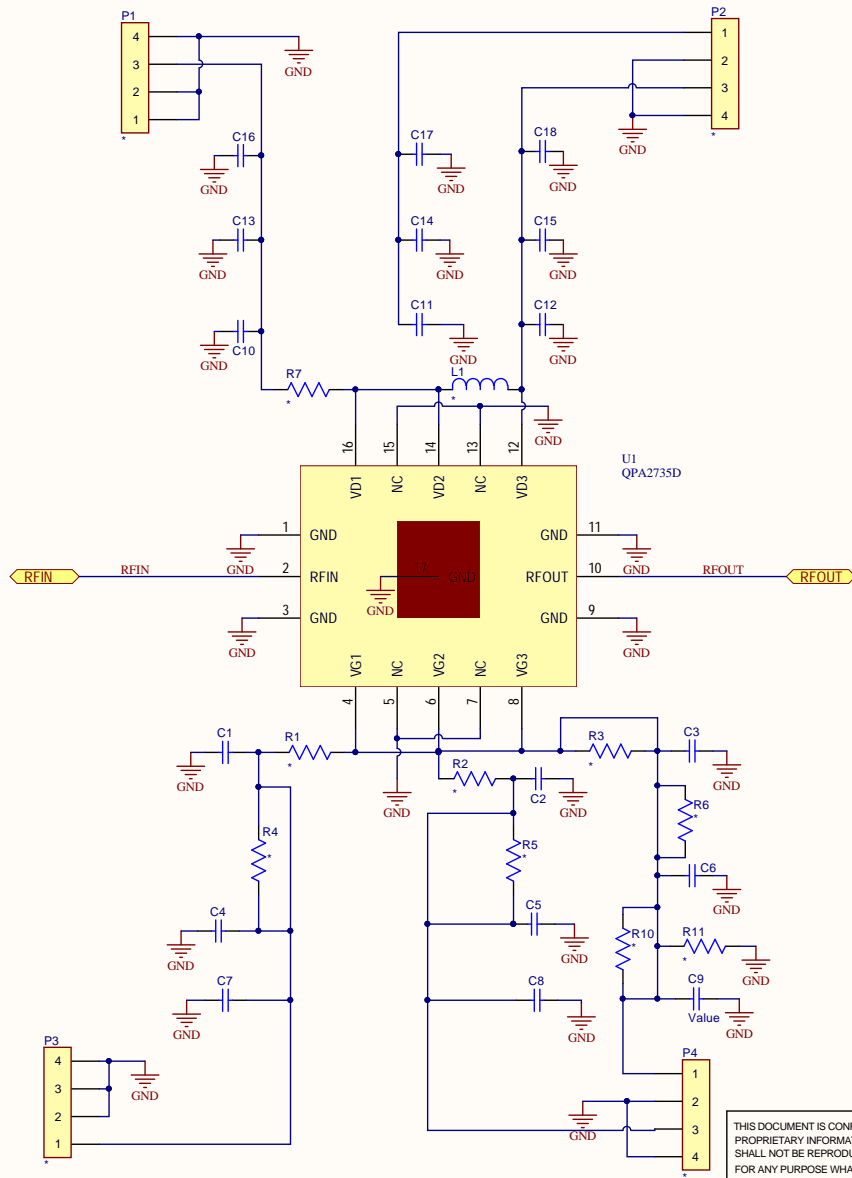
THIS DOCUMENT IS CONFIDENTIAL AND REPRESENTS  
PROPRIETARY INFORMATION, THE PROPERTY OF QORVO  
AND SHALL NOT BE REPRODUCED IN ANY MANNER  
NOR USED FOR ANY PURPOSE WHATSOEVER,  
EXCEPT AS SPECIFIED IN WRITING BY QORVO

| SIZE   | CAGE CODE | DWG. NO.     | REV. |
|--------|-----------|--------------|------|
| B      | 1CVM1     | QPA2735-4000 | A    |
| SCALE: | 1:1       | SHEET 2 OF 3 |      |




THIS DOCUMENT IS CONFIDENTIAL AND REPRESENTS  
PROPRIETARY INFORMATION, THE PROPERTY OF QORVO  
AND SHALL NOT BE REPRODUCED IN ANY MANNER  
NOR USED FOR ANY PURPOSE WHATSOEVER,  
EXCEPT AS SPECIFIED IN WRITING BY QORVO

| SIZE   | CAGE CODE | DWG. NO.     | REV. |
|--------|-----------|--------------|------|
| B      | 1CVM1     | QPA2735-4000 | A    |
| SCALE: | 1:1       | SHEET 3 OF 3 |      |



| REVISION HISTORY |             |          |          |
|------------------|-------------|----------|----------|
| REV              | DESCRIPTION | DATE     | APPROVAL |
| A                | NEW RELEASE | 02-26-18 | TThomas  |

|  |         |              |   |              |
|--|---------|--------------|---|--------------|
| SAP NO. 287458                                 |         |              |  |              |
| APPROVAL AND RELEASE RECORDS MAINTAINED IN PDE |         | DATE         |   |              |
| DESIGNER                                       | TThomas | 02-26-18     | TITLE:<br><b>PCB, QPA2735-4000</b>  |              |
| ENGR.  | RClark  | 02-26-18     |   |              |
| PDE CONTROLLED                                 |         |              | SIZE  | DWG. NO.     |
|  |         |              | B   | QPA2735-4000 |
| CAGE CODE                                      | 1CVM1   |              | REV.  | A            |
| SCALE: NTS                                     |         | SHEET 1 OF 1 |   |              |

THIS DOCUMENT IS CONFIDENTIAL AND REPRESENTS PROPRIETARY INFORMATION, THE PROPERTY OF QORVO, AND SHALL NOT BE REPRODUCED IN ANY MANNER NOR USED FOR ANY PURPOSE WHATSOEVER, EXCEPT AS SPECIFIED IN WRITING BY QORVO.